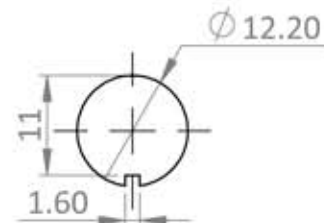
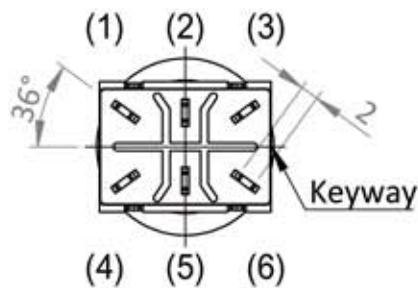
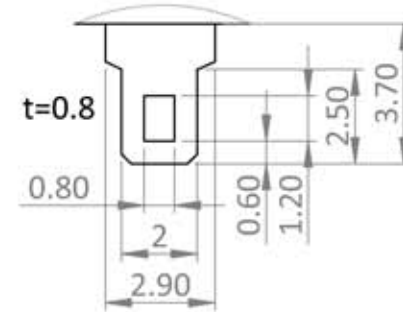


Solder Terminal  
(Ratio 5:1)



Panel Thickness :  
3.0mm Max.

1. Rating : AC 125V 4A 250V 2A
2. Contact R. : 50mΩ Max.
3. Insulation R. : DC 500V 100MΩ Min.
4. Dielectric Strength : AC 1500V 1 minute.
5. Electrical Life : 50,000 make-and-break cycles at full load.
6. Operating temperature : -20°C~65°C

				Item#	01-690A/B/C (NEW)			Part#	PB-4166-1			Rev.	0					
Modify	Date	Revision		Approval	No.	Title			Stomp Foot Pedal Switch			Part	Unit		m/m			
							Mat'l			Finish			Ratio		1.2:1			
Size	0.5-6	>6-30	>30-120	>120-400			Auth			Matt+D	CHK	Derek	DWG	Angela	Date	2017/10/24	Proj.	3rd
Tol	+/-0.05	+/-0.1	+/-0.15	+/-0.2														