



AI detects & deters intruders.

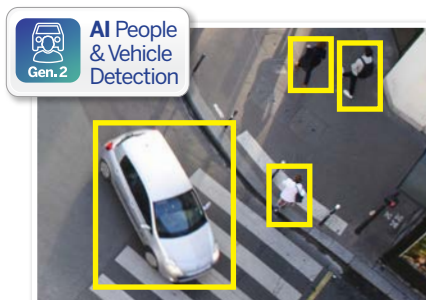
Professional AI Series: Fixed lens AI active deterrence turrets in 6.0MP and 8.0MP

The Professional AI Series utilises the latest in AI machine learning technology to identify people & vehicles with superior accuracy and reliability. The active deterrence range incorporates AI detection and a variety of in-camera features to deter intruders. Upon a human or vehicle detection event, these cameras can trigger a white LED spotlight for security lighting, a flashing blue/red LED strobe and a loud siren with programmable message/tones, to deter intruders. They are ideal for active security across a variety of residential and commercial applications.

- Stream up to 8.0MP (3840 x 2160) at 25fps
- Activates spotlight, flashing light & siren, switching from IR to colour footage in response to alarm events
- 24/7 Colour low light footage as low as 0.003lx
- Up to 30m infrared, BLC/HLC & true WDR (120dB)
- Intelligent AI detection to identify people & vehicles
- Next-Gen Smart Motion Detection (SMD 4.0) & Perimeter Protection to prevent false alarms, using VIP Vision NVRs
- AI SSA detects/adjusts exposure to ensure clear video.
- IP67 weather rated housing for outdoor use



Spotlight, Siren & Blue/Red Strobe



AI Human & Vehicle Detection



AI Adapts Scene for Best Picture

Specifications	6.0MP Fixed AI Deterrence Turret	8.0MP Fixed AI Deterrence Turret	
Ordering Information	VSIPP-6DG-ID3	VSIPP-8DG-ID3 VSIPP-8DG-ID3-B	
Image Sensor	1/2.7" 6.0MP Progressive Scan CMOS	1/2.8" 8.0MP Progressive Scan CMOS	
Effective Pixels	3200 (H) x 1800 (V)	3840 (H) x 2160 (V)	
RAM / ROM	512MB / 128MB		
Min Illumination	0.003 Lux/F1.0 (Color), 0.0003 lux/F1.0 (B/W, 30 IRE), 0 lux (IR)	0.004 Lux/F1.0 (Color), 0.0004 lux/F1.0 (B/W, 30 IRE), 0 lux (IR)	
Electronic Shutter	1/3 ~ 1/100,000s		
S/N Ratio	> 56dB		
Infrared System	1 x Infrared LED, 30m range, Auto/manual on/off control		
LED Illumination	1 x Spotlight (Warm White), 1 x Red & Blue Alarm Light		
Lens / Iris	2.8mm F1.0 Fixed Lens	2.8mm F1.0 Fixed Lens	
Field of View	Horizontal: 97°, Vertical: 70°, Diagonal: 128°	Horizontal: 106°, Vertical: 55°, Diagonal: 125°	
Focus	Auto Focus / 1.5m Min. Focus Distance	Auto Focus / 2m Min. Focus Distance	
DORI			
Detect (25px/m)	66m	91m	
Observe (63px/m)	26m	36m	
Recognise (125px/m)	13m	18m	
Identify (250px/m)	7m	9m	
Resolution	6.0MP (3200 x 1800) to CIF (352 x 288)	8.0MP (3840 x 2160) to CIF (352 x 288)	
Frame Rate	Main	6.0MP (1 ~ 25fps)	
	Sub	704 x 576 (1 ~ 25fps)	
	Third	1080p (1 ~ 25fps)	
Video Compression	H.265+ / H.265 / H.264+ / H.264 / H.264B / MJPEG		
Bit Rate	H.265: 32 ~ 20480Kbps / H.264: 12 ~ 20480Kbps		
Bit Rate Control	Constant bit rate (CBR) / Variable bit rate (VBR)		
Day/Night	Auto (ICR) / Color / B&W		
Lighting Compensation	BLC / HLC / WDR (120dB)		
Smart Scene Adaptive	SSA		
White Balance	Auto / Natural / Street Lamp / Outdoor / Manual		
Gain Control	Auto / Manual		
Noise Reduction	3D DNR		
Picture Control	Mirror / Flip (0°, 90°, 180°, 270°)		
Video Functions	Motion Detection (4 zones), Region of Interest (4 zones), Privacy Masking (4 zones), Smart Illumination, Defog, Object Abandoned / Missing, Heat Map Event Triggers: Motion Detection, Perimeter Protection, Video Tampering, Scene Changing, Network Disconnection, IP Address Conflict, Illegal Access, Storage Anomaly		
AI Functions	Perimeter Protection: People and vehicle detection using tripwire or intrusion rules Loitering detection: People gathering and parking detection		
Intelligent search	Search people or vehicle detection events (Perimeter Protection)		
Network	RJ-45 (10/100Base-T)		
Protocol	IPv4; IPv6; HTTP; TCP; UDP; ARP; RTP; RTSP; RTCP; RTMP; SMTP; FTP; SFTP; DHCP; DNS; DDNS; QoS; UPnP; NTP; Multicast; ICMP; IGMP; NFS; SAMBA; PPPoE; SNMP		
Streaming Method	Unicast / Multicast		
Max. User Access	20 Users (Total bandwidth: 72MB)		
Video Interface	N/A		
Audio Interface	Built-in Mic & Built-in Speaker / Audio Compression - PCM; G.711a; G.711Mu; G.726; G.723		
Alarm Interface	1 channel in: 5mA 3-5VDC / 1 channel out: 300mA 12VDC		
RS485	N/A		
Edge Storage	MicroSD Card (up to 256GB) / NAS / FTP / SFTP		
Interoperability	ONVIF (Profile S, Profile G, Profile T) / P2P / CGI / Milestone		
Power Supply	12VDC / PoE (802.3af)		
Power Consumption	<8.8W	<10.2W	
Operating Conditions	-40°C ~ +60°C / ≤95% RH		
Ingress Protection	IP67		
Vandal Resistance	N/A		
Housing	Metal		
Pan/Tilt/Rotation	Pan: 0° ~ 360°, Tilt: 0° ~ 78°, Rotation: 0° ~ 360°		
Dimensions	Ø122mm x 111mm		
Net Weight	0.75kg		
Accessories		Junction Box	Ceiling Mount
		VSBKTA137	VSBKTA109 + VSBKTB220C
		Wall Mount	Pole Mount
		VSBKTB205W	VSBKTB205W + VSBKTA152E

Your local VIP Vision™ IP solutions professional: