

# Incredible Image Performance

## Ultimate Series: Motorized Vari-focal HDCVI IR Bullet in 2.0MP & 5MP

Experience unparalleled performance with the Ultimate Series from Securview, with image performance of 5.0MP/ Ultra HD, Vari-focal, true WDR and audio.

- Stream up to 2MP (1920 × 1080) at 30fps
- Smart infrared illumination, up to 80m range
- 5MP CMOS sensor for excellent low light performance
- Auto Focus, 2.7mm-13.5mm motorized lens
- Black and white image in low light at 0.001lx
- True WDR (130dB) and 3D noise reduction
- IP67, metal weather rated camera housing
- Supports audio signal via coaxial cable



Stream Ultra HD

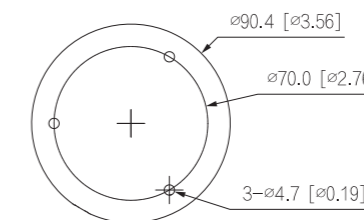
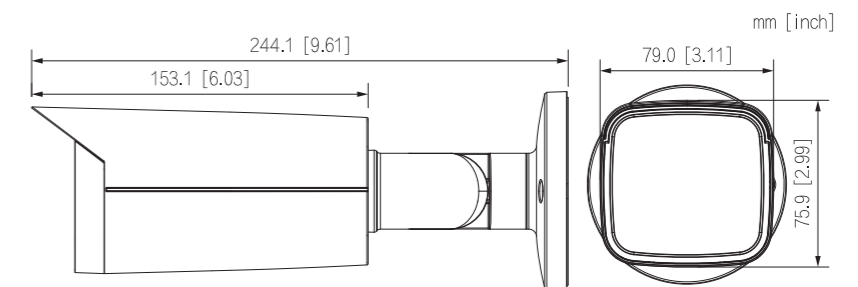


Cross Compatibility



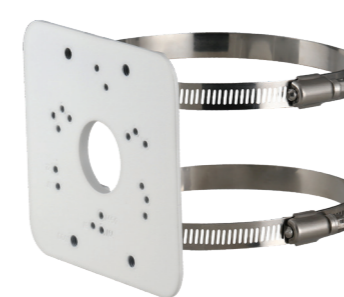
Remarkable low light Performance

Model	VSCVI-2BIRMG	VSCVI-5BIRMG2	
Image Sensor	2MP CMOS	1/2.7" 5.0 Megapixel CMOS	
Effective Pixels	1920 (H) × 1080 (V)	2880 (H) × 1620 (V)	
Signal Noise Ratio	> 65dB		
Lens	2.7mm ~ 13.5mm F1.5 Motorized Lens	2.7mm ~ 13.5mm F1.6 Motorised Lens, fixed iris	
Angle of View	(H) 108.° ~ 30° (tele)	113° (wide) ~ 31° (tele)	
Focus	Fixed / 0.8m Min. Focus Distance		
Minimum Illumination	0.001 Lux at F1.5 (Colour) / 0 Lux IR Active	0.001 Lux at F1.6 (Colour) / 0 Lux IR Active	
Electronic Shutter	1/25 s ~ 1/100,000s	1/3 ~ 1/100,000s	
Day/Night	Auto (ICR) / Manual / Colour / BW		
Infrared Range	80m		
White Balance	Auto / Area WB	Auto / Manual	
Noise Reduction	3D NR		
Gain Control	Auto / Manual		
Lighting Compensation	BLC / HLC / WDR/HLC-Pro (120dB)		
Resolution	2.0MP (1920 x 1080) to 960H (960 x 576)	5.0MP (2880 x 1620) to 960H (960 x 576)	
Frame Rate	25fps (1080p and lower)		
Transmission Distance	Rated for up to 700m via coaxial cable (performed in ideal test conditions)		
DORI	Detect	44.1m	
	Observe	17.6m	
	Recognise	8.8m	
	Identify	4.4m	
Interface	Audio Input	1 Channel built-in microphone	
	Alarm Interface	N/A	
	Video Output	1 x CVI / TVI / AHD / CVBS / Composite Video Output (DIP switch)	
	OSD Menu	Support	
Environmental	Ingress Protection	IP67	
	Vandal Resistant	N/A	
	Housing	Metal	
	Power Input	24VAC / 12VDC	
	Power Consumption	< 12.5W	
	Dimensions	244.1mm x 90.4mm x 90.4mm	
	Weight	0.82kg	0.79kg
Operating Environment	-30° to +60°C / RH95% (max)		

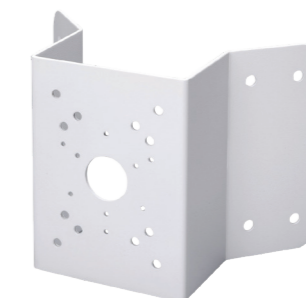


Diagram

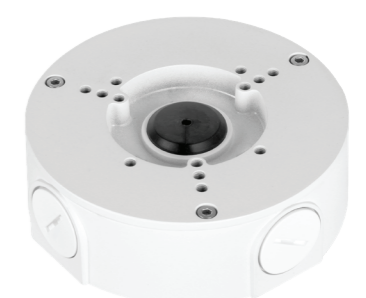
Accessories



Pole Mount (VSBKTA152E)



Wall Mount Camera Bracket (VSBKTA151)



Adapter/Junction Box (VSBKTA130E)

Accessories

Models